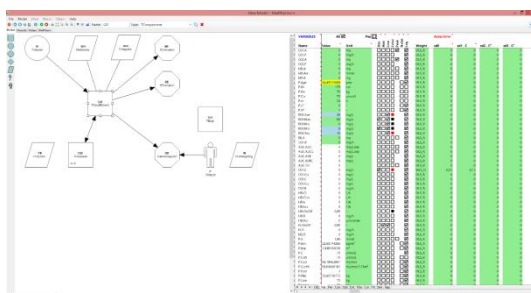


## MEDIWARE a.s.

### Product Highlights

### MwPharm++



MwPharm++ is a clinical pharmacokinetic software. It is used primarily to establish proper dosing regimen which is determined both by the population PK parameters from the MwPharm++ drug database and based on individual patient physiological parameters. The software can simulate and optimize the PK parameters by curve-fitting them to the measured data which enables to redefine the dosage regimen.

Edsim++ is an object oriented visual pharmacokinetic pharmacodynamics (PKPD) modelling tool. Its elegant and innovative user interface makes the software extremely simple to use so that it is well suited for teaching pharmacokinetics. Edsim++ is equipped with a large extendable library of advanced PKPD objects that can be used for building complex models as required in a research environment. PKPD processes are represented by objects which can be connected to each other. Models can be reused with the MwPharm++ application for use in TDM.

KinPop++ a completely new module called KinPop++ has been added to Edsim++. KinPop++ performs a population pharmacokinetic analysis by an 'Iterative two-stage Bayesian population procedure' (ITSB).

Kinpop++ can be used for preparation population focused models. In comparison with NONMEM KinPop++ is suitable for routine clinical application.