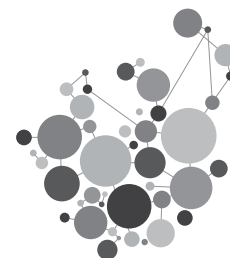


PROGRAM _ October 27, Thursday

Quality Saves Your Life
LMCE Laboratory Medicine Congress & Exhibition
2016
& KSLM 57th ANNUAL MEETING

Floor	Convention 1F	Avenue 3F	Convention 2F		Avenue 2F	Avenue 1F	
Room	Four Seasons	Dongkang Hall	Grand Ballroom A	Grand Ballroom B	Geumkang Hall A	Hankang Hall	
08:00	Exhibition	Poster	EW 01 Greencross Medical Science Corp.	KS 01 Quality issues and challenges of medical laboratory in the era of genomic medicine			
09:00			SY 06 The role of the laboratory medicine in nutritional support; emerging considerations especially in Vitamin D	SY 07 Current research topics in clinical microbiology: Bacteria, fungi and virus	OP 01 Diagnostic Immunology & Diagnostic Genetics	Senate Meeting	
10:00			Break				
11:00			PL 02 AACC-KSLM Select Session Pediatric clinical chemistry: Things that make it different. (Grand Ballroom B, 2F)				
12:00			EW 02 Abbott Korea	EW 03 Seegene	EW 04 HANDOK inc.	EW 05 Beckman Coulter Korea Ltd.	
13:00			SY 08 Immunological considerations for emerging viral diseases	SY 09 AACC-KSLM Select Session Antiplatelet agents and anticoagulants: Laboratory monitoring	OP 02 Clinical Chemistry	SY 10 (K) Practice of health examination	
14:00			Break				
15:00			SY 11 CLSI: IQCP practical issues	OP 03 Diagnostic Genetics	OP 04 Clinical Microbiology	SY 12 (K) Understanding of standardization and quality control system in public and hospital diagnostic laboratory for infectious diseases	
16:00							
17:00			SIEMENS Workshop		KS 02 Individualising and personalising IVF using endocrine assays		
18:00			Poster Presentation & Exhibition				
19:00			Banquet (Grand Ballroom B, 2F)				
20:00							

PL: Plenary Lecture
 KS: Keynote Speech
 SY: Symposium
 EW: Education Workshop
 OP: Oral Presentation
 K: Korean



DAILY PROGRAM _ October 27, Thursday

08:00 - 09:00 **Education Workshop 01** Grand Ballroom A
(Eng.) **(Greencross Medical Science Corp.)** (Convention Center 2F)

Chair Eun-Suk Kang, Sungkyunkwan University School of Medicine, Korea

OPTIGEN® AP3600™, Speeds up the panel allergy testing process and enhances reliability and diagnostic precision

Dianna Innerst, Process Engineering, USA

Quality Saves Your Life

LMCE
2016

Laboratory
Medicine
Congress &
Exhibition

& **KSLM** 57th ANNUAL
MEETING

08:00 - 08:40 **Keynote Speech 01** Grand Ballroom B
(Eng.) (Convention Center 2F)

Chair Jong-Won Kim, Sungkyunkwan University School of Medicine, Korea

Quality issues and challenges of medical laboratory in the era of genomic medicine

Hayato Miyachi, Tokai University School of Medicine, Japan

09:00 - 10:40 **Symposium 06:** Grand Ballroom A
(Eng.) **The role of the laboratory medicine in nutritional support; emerging considerations especially in Vitamin D** (Convention Center 2F)

Chairs Gye Cheol Kwon, Chungnam National University College of Medicine, Korea
Ian S Young, Centre for Public Health, Queen's University Belfast, UK

SY06-01 **The role of the laboratory in nutritional support**
Ian S Young, Centre for Public Health, Queen's University Belfast, UK

SY06-02 **Is Vitamin D critical for improved health outcomes? When to assess Vitamin D status**
Howard Morris, Medical Science University of South Australia, Australia

SY06-03 **Measurement of Vitamin D in clinical laboratories**
Sung Eun Cho, LabGenomics Clinical Laboratories, Korea

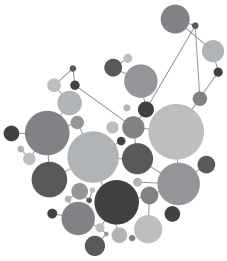
09:00 - 10:40 **Symposium 07:** Grand Ballroom B
(Eng.) **Current research topics in clinical microbiology: Bacteria, fungi and virus** (Convention Center 2F)

Chairs Jong Hee Shin, Chonnam National University Medical School, Korea
Chulhun Chang, Pusan National University School of Medicine, Korea

SY07-01 **Current technology platforms to detect antimicrobial resistance**
Donggeun Yong, Yonsei University College of Medicine, Korea

SY07-02 **Multidrug-resistance among fungal isolates**
Maurizio Sanguinetti, Catholic University of Rome, Italy

SY07-03 **Dengue situation in Vietnam and quasispecies of Dengue viruses**
Futoshi Hasebe, Nagasaki University, Japan



DAILY PROGRAM _ October 27, Thursday

Quality Saves Your Life

LMCE
2016
& **KSLM**
Laboratory
Medicine
Congress &
Exhibition
57th ANNUAL
MEETING

09:00 - 10:40 (Eng.)	Oral Presentation 01	Geumkang Hall A (Avenue 2F)
Chairs	Eun-Suk Kang, Sungkyunkwan University School of Medicine, Korea Myung-Geun Shin, Chonnam National University Medical School, Korea	
0-35	Association of HLA-DP variants with responsiveness to Hepatitis B Virus vaccination in Korean infants <i>Nuri Lee, Seoul National University College of Medicine, Korea</i>	
0-36	A novel flow cytometric method for the simultaneous detection of antibodies against platelets, lymphocytes, and neutrophils <i>Myung Chul Suh, Kyungpook National University Hospital, Korea</i>	
0-37	Delay of serum separation reduces the level of insulin and parathyroid hormone in blood <i>Eun Jin Lee, Hallym University College of Medicine, Korea</i>	
0-38	Usefulness of pretransplant endothelial cell antibody crossmatch and angiotensin II Type 1 receptor antibodies to predict graft function and allograft rejection in kidney transplantation <i>Shinae Yu, Inje University Haeundae Paik Hospital, Korea</i>	
0-39	Next-generation sequencing for human leukocyte antigen typing: performance validation of data analysis programs <i>Yunhee Park, Yonsei University College of Medicine, Korea</i>	
0-40	Seroprevalence of TORCH infections with fetal congenital malformation in Mongolia <i>Amarjargal Olzvoi, National Center For Maternal and Child Health, Mongolia</i>	
0-41	Utilization review of paraneoplastic neurological syndrome testing results reveals a need for more effective diagnostic algorithm: a single institution review at a large academic healthcare center <i>Jong Kim, University of Florida, USA</i>	
0-42	Expression of N-Glycan recognized by monoclonal antibody FE-1H10 linked to cytotoxic function of CD3-CD56 ^{dim} NK Cells <i>Saichit Khummuang, Biomedical Technology Research Center, Thailand</i>	
0-47	Culture of circulating tumor cells using conditionally reprogrammed cell technology <i>Chang-Ho Jeon, Daegu Catholic University Medical Center, Korea</i>	
0-48	Clinical performance of a microarray-based diagnostic kit for sexually transmitted diseases: STDetect Chip <i>Jongwon Kim, LabGenomics Co., Korea</i>	
09:30 - 11:00 (Kor.)	Senate Meeting	Hankang Hall (Avenue 1F)
10:40 - 11:00	Break	



DAILY PROGRAM _ October 27, Thursday

11:00 - 12:00 **Plenary Lecture 02: AACC-KSLM Select Session** Grand Ballroom B
(Eng.) (Convention Center 2F)

Chairs Jeong-Ho Kim, Yonsei University College of Medicine, Korea
Won-Ki Min, University of Ulsan, College of Medicine, Korea

Pediatric clinical chemistry: Things that make it different.
Patricia M. Jones, University of Texas Southwestern Medical Center, USA

Quality Saves Your Life
LMCE
2016
& **KSLM**
Laboratory
Medicine
Congress &
Exhibition
57th ANNUAL
MEETING

12:00 - 13:00 **Education Workshop 02 (Abbott Korea)** Grand Ballroom A
(Eng.) (Convention Center 2F)

Chair Ki Sook Hong, Ewha Womans University School of Medicine, Korea

State-of-the-art cardiac biomarkers: from the laboratory to healthier hospitals
Nicholas L. Mills, University of Edinburgh, UK

12:00 - 13:00 **Education Workshop 03 (Seegene)** Grand Ballroom B
(Eng.) (Convention Center 2F)

Chair Miae Lee, Ewha Womans University School of Medicine, Korea

New concept of Real-time PCR technology
Dae-Hoon Lee, Seegene Institute of Life Sciences, Korea

Experience of new Real-time PCR assays for diagnosis of respiratory tract infection
Heungsup Sung, University of Ulsan College of Medicine, Korea

12:00 - 13:00 **Education Workshop 04 (HANDOK inc.)** Geumkang Hall A
(Eng.) (Avenue 2F)

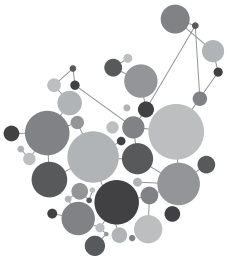
Chair Mi-Na Kim, University of Ulsan College of Medicine, Korea

MALDI-TOF mass spectrometry, innovative technology for microbial identification and diagnosis
Katsunori Yanagihara, Nagasaki University Hospital, Japan

12:00 - 13:00 **Education Workshop 05 (Beckman Coulter Korea Ltd.)** Hankang Hall
(Eng.) (Avenue 1F)

Chair Chang-Seok Ki, Sungkyunkwan University School of Medicine, Korea

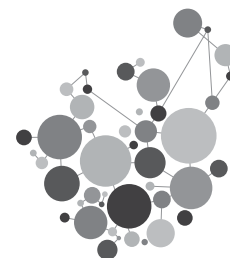
Workflow characteristics of the Beckman Coulter DxN VERIS molecular diagnostic system compared against four automated laboratory instruments
Pierre Le Roux, Scientific Marketing Manager Europe, Molecular Diagnostics, Beckman Coulter



DAILY PROGRAM _ October 27, Thursday

Quality Saves Your Life
LMCE
2016
& **KSLM**
Laboratory
Medicine
Congress &
Exhibition
57th ANNUAL
MEETING

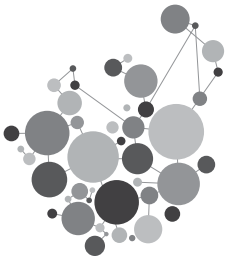
- 13:00 - 14:40 (Eng.) **Symposium 08: Immunological considerations for emerging viral diseases** Grand Ballroom A (Convention Center 2F)
- Chairs Ae Ja Park, Chung Ang University College of Medicine, Korea
Hee Jung Kang, Hallym University College of Medicine, Korea
- SY08-01 **Immune response to viral infections**
Jonathan W. Yewdell, National Institute of Allergy and Infectious Disease, USA
- SY08-02 **Vaccine development for the emerging virus diseases**
Linfa Wang, Duke-NUS Medical School, Singapore
- SY08-03 **Antibody reaction in patients with MERS-CoV infections**
Kyong Ran Peck, Sungkyunkwan University School of Medicine, Korea
- 13:00 - 14:40 (Eng.) **Symposium 09: AACC-KSLM Select Session Antiplatelet agents and anticoagulants: laboratory monitoring** Grand Ballroom B (Convention Center 2F)
- Chairs Kyungja Han, The Catholic University of Korea, College of Medicine, Korea
Hyun Kyung Kim, Seoul National University College of Medicine, Korea
- SY09-01 **Anti-platelet agents**
Neil S. Harris, University of Florida College of Medicine, USA
- SY09-02 **Clinical implications of monitoring direct oral anticoagulants**
Chad Botz, University of Texas Medical Branch, USA
- SY09-03 **Platelet function testing**
John V. Mitsios, Weill Cornell College of Medicine, USA
- 13:00 - 14:50 (Eng.) **Oral Presentation 02** Geumkang Hall A (Avenue 2F)
- Chairs Ille-Kyu Park, Hanyang University Medical Center, Guri Hospital, Korea
Kyung Dong Kim, Yeungnam University Hospital, Korea
- O-10 **Proenkephalin, neutrophil gelatinase-associated lipocalin, and estimated glomerular filtration rates in patients with sepsis**
Hanah Kim, Konkuk University School of Medicine, Korea
- O-11 **The 99th percentile values of six cardiac troponin assays established for a reference population using strict selection criteria**
Dae-Hyun Ko, Hallym University College of Medicine Dongtan Sacred Heart Hospital, Korea
- O-12 **Urinary N-acetyl-β-D -glucosaminidase index as a marker of early renal damage in patients with diabetes mellitus or hypertension**
Eunyup Lee, Hallym University College of Medicine, Korea



DAILY PROGRAM _ October 27, Thursday

Quality Saves Your Life
LMCE
2016
Laboratory
Medicine
Congress &
Exhibition
& **KSLM** 57th ANNUAL
MEETING

- 0-13 Building an experiential knowledge base using induct RDR to inference comments in laboratory information systems
Hyoeun Shim, Seegene Medical Foundation, Korea
- 0-14 Clinical evaluation of the nematode scent detection test using caenorhabditis elegans in Korean cancer patients
Hyun-Seung Lee, Chonnam National University Medical School, Korea
- 0-15 A strategy to decrease the manual microscopic examination by introduction of the automated urinary sediment analyzer
Eun-Jung Cho, University of Ulsan College of Medicine and Asan Medical Center, Korea
- 0-16 Implication of serum delta-bilirubin in different types of jaundice
Susruta Sen, The Calcutta Medical Research Institute, India
- 0-17 Role of pyruvate dehydrogenase and transketolase in body weight reduction activity of *Abrus precatorius* L. leaves in rats
Tanaya Ghosh, Sikkim Manipal Institute of Medical Sciences, India
- 0-18 Significance of Serum Beta 2 Microglobulin as a prognostic marker in non hodgkin lymphoma
Garima Gupta, All India Institute Of Medical Sciences, India
- 0-19 Role of insulin auto antibody production in glycemic derangement and its association with inflammation and lipodystrophy in Type 1 diabetes mellitus
Subhadip Choudhuri, GD Hospital and Diabetes Institute, India
- 0-20 Effect of matrix on metabolite profile in the emergency setting using dry chemistry technology comparisons of metabolite profile from paired serum and EDTA -plasma samples obtained using dry chemistry technology
Lokesh Sharma, Pgimer-Dr. Ram Manohar Lohia Hospital, New Delhi, India
- 0-21 Optimisation of rs671 genotyping and evaluation of its role in development of alcohol dependence in an Indian population
Prasenjit Mitra, All India Institute of Medical Sciences, India
-
- 13:10 - 14:40 (Kor.) **Symposium 10: Practice of health examination** Hankang Hall (Avenue 1F)
- Chairs Won-Kil Lee, Kyungpook National University School of Medicine, Korea
Yungzoon Jung, Nasaret International Hospital, Korea
- SY10-01 The cases of redemption in national health examination
Se-myeong Jang, National Health Insurance Service, Korea
- SY10-02 Stability of laboratory samples for NIS (National Health Insurance) health checkup
Eun-Hee Nah, Korea Association of Health Promotion, Korea
- SY10-03 Brief of assessment guideline for Health checkup hospitals
Yeongchun Park, Daechong Hospital, Korea
- SY10-04 Algorithm in assessment of health examination results
Yungzoon Jung, Nasaret International Hospital, Korea



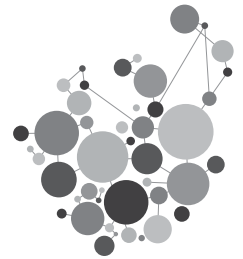
DAILY PROGRAM _ October 27, Thursday

Quality Saves Your Life

LMCE
2016
& **KSLM**
Laboratory
Medicine
Congress &
Exhibition
57th ANNUAL
MEETING

- 14:40 - 15:00 Break
- 15:00 - 16:40 (Eng.) **Symposium 11: IQCP practical issues** Grand Ballroom A (Convention Center 2F)
- Chairs Sun-Hee Kim, Samsung Medical Center, Sungkyunkwan University School of Medicine, Korea
Earle Smith Collum, St Joseph's Hospital and Medical Center, USA
- SY11-01 Individualized Quality Control Plan (IQCP): Overview and examples of implementation
Earle Smith Collum, St Joseph's Hospital and Medical Center, USA
- SY11-02 Reducing laboratory errors through Individualized Quality Control Plan (IQCP): How do we begin?
Eun Hee Lee, Green Cross Laboratories, Korea
- 15:00 - 16:40 (Eng.) **Oral Presentation 03** Grand Ballroom B (Convention Center 2F)
- Chairs Jong Rak Choi, Yonsei University College of Medicine, Korea
Myungshin Kim, College of Medicine, The Catholic University of Korea, Korea
- 0-49 Diagnostic and clinical implications of a targeted NGS panel in autism spectrum disorders
Yu Jin Park, Yonsei University College of Medicine, Korea
- 0-50 Clinical and diagnostic utility of targeted next generation sequencing in patients with early onset epilepsy
John Hoon Rim, Yonsei University College of Medicine, Korea
- 0-51 Evidence-based guidelines for Prenatal Genetic Diagnosis of 163 single-gene disorders in Korea
Ju Sun Song, Sungkyunkwan University School of Medicine, Korea
- 0-52 Performance evaluation of copy number variation detection tools applied to massively parallel sequencing data obtained from TruSight one panel
Ja-Hyun Jang, Green Cross Laboratories, Korea
- 0-53 Array comparative genomic hybridization analysis of acute myeloid leukemia with complex karyotype including marker chromosomes
Chang Ahn Seol, University of Ulsan College of Medicine and Asan Medical Center, Korea
- 0-54 Next generation sequencing of 35 cancer predisposition genes in patients with breast and/or ovarian cancer reveals a wide genetic heterogeneity
Jieun Kim, Yonsei University College of Medicine, Korea
- 0-55 Clinical experience of G-NIPT in 2,043 consecutive Korean pregnancies
Eunhae Cho, Green Cross Genome, Korea
- 0-56 Caspase-3: The main therapeutic target in colon cancer
Iraj Khodadadi Kohlan, Hamadan University of Medical Sciences, Iran

DAILY PROGRAM _ October 27, Thursday



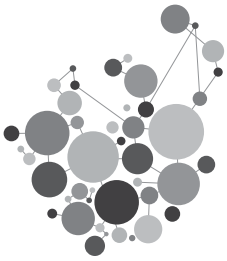
- 0-57 BRCA1, ERCC1, RRM1, and RRM2 mRNA expression as predictive markers of neoadjuvant chemotherapy in breast cancer
Tatiana Zhinzhiro, Medical Rehabilitation Center of the Ministry of Health of Russia, Russia
- 0-58 The major changes in gilbert's syndrome and UGT1A1 gene abnormalities in Mongolians are western type
Nyam Biziya, Molor Laboratory, Mongolia

Quality Saves Your Life
LMCE
2016
& **KSLM**
Laboratory
Medicine
Congress &
Exhibition
57th ANNUAL
MEETING

15:00 - 16:40 **Oral Presentation 04** Geumkang Hall A
(Eng.) (Avenue 2F)

Chairs Seok Hoon Jeong, Yonsei University College of Medicine, Korea
SunHwa Lee, Seegene Medical Foundation, Korea

- 0-22 Comparison of diagnostic algorithms for the detection of toxigenic *Clostridium difficile* in routine practice at a tertiary referral hospital in Korea
Hyeong Nyeon Kim, Konkuk University School of Medicine, Korea
- 0-23 Molecular analysis of human bocavirus in children with gastroenteritis and respiratory tract infection
Eun Jin Lee, Hallym University College of Medicine, Korea
- 0-24 Nationwide survey of routine stool culture methodology in Korean hospitals in 2016
Sunjoon Kim, Gyeongsang National University School of Medicine, Korea
- 0-25 Molecular epidemiology of *Aspergillus fumigatus* clinical isolates from 11 hospitals in Korea
Soo Hyun Kim, Chonnam National University Medical School, Korea
- 0-26 Microsatellite typing for analysis of clonality of *Candida parapsilosis* strains with fluconazole resistance in Korea
Yong Jun Choi, Chonnam National University Medical School, Korea
- 0-27 Gene expression and transcriptome analysis of a small colony variant of *Enterococcus faecium* using large scale high accuracy sequencing
Jeonghyun Chang, University of Ulsan College of Medicine and Asan Medical Center, Korea
- 0-28 Clinical Validation of rapid anti-tuberculosis drug susceptibility test using QuantaMatrix microscopic time-lapse imaging-based morphological analysis
Daehyun Chu, University of Ulsan College of Medicine, Korea
- 0-29 Systemic sclerosis is characterized by a divergent gut microbiota composition
Maurizio Sanguinetti, Catholic University of Rome, Italy
- 0-30 Genetic diversity and drug susceptibility of *Mycobacterium tuberculosis* isolates in Myanmar: comparison between new and re-treated cases
Phyu Win Ei, Advanced Molecular Research Centre, Myanmar
- 0-31 Pyrazinamide resistance and patterns of *pncA* gene mutations in clinical *Mycobacterium tuberculosis* strains from Myanmar
Wah Wah Aung, Advanced Molecular Research Centre, Myanmar



DAILY PROGRAM _ October 27, Thursday

Quality Saves Your Life

LMCE
2016
& **KSLM**
Laboratory
Medicine
Congress &
Exhibition
57th ANNUAL
MEETING

15:00 - 16:40 (Kor.)	Symposium 12: Understanding of standardization and quality control system in public and hospital diagnostic laboratory for infectious diseases	Hankang Hall (Avenue 1F)
Chairs	Chun Kang, Korea Centers for Disease Control & Prevention, Korea Nam Yong Lee, Sungkyunkwan University School of Medicine, Korea	
SY12-01	Introduction of WHO IB-VPD surveillance network; The activities of WPRO regional reference laboratory of NIH <i>Songmee Bae, Div. of Tuberculosis & Bacterial Respiratory Infections, National Institute of Health, Korea Centers for Disease Control and Prevention, Korea</i>	
SY12-02	Initiation and development of laboratory standardization: The Korean Laboratory Accreditation Program (KLAP) <i>Woo-In Lee, Kyung Hee University School of Medicine, Korea</i>	
SY12-03	National HIV External Quality Assurance Schemes (EQAS) <i>Byeong-Sun Choi, Center for Immunology and Pathology, Korea National Institute of Health, Korea</i>	
SY12-04	Quality control (QC) and quality assurance for the best result in hospital laboratory <i>Jae-Seok Kim, Hallym University College of Medicine, Korea</i>	
16:40 - 17:40 (Eng.)	Siemens Workshop	Grand Ballroom A (Convention Center 2F)
Chair	Je Hoon Lee, College of Medicine, The Catholic University of Korea, Korea	
	Updates on diagnostic assessment of Graves' disease – Thyroid Stimulating Antibody (TSI) <i>Alexander Wong, Siemens Healthcare Pte Ltd., Singapore</i>	
16:40 - 17:20 (Eng.)	Keynote Speech 02	Grand Ballroom B (Convention Center 2F)
Chair	Yunjung Cho, Korea University College of Medicine, Korea	
	Individualising and personalising IVF using endocrine assays <i>Scott M Nelson, University of Glasgow, UK</i>	
17:30 - 18:30 (Eng.)	Poster Presentation (Dongkang Hall (Avenue 3F)) & Exhibition	
18:30 - 20:00	Banquet (Siemens Night)	Grand Ballroom B (Convention Center 2F)