

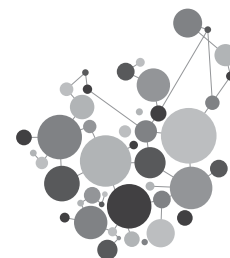
# PROGRAM \_ October 28, Friday



Quality Saves Your Life  
**LMCE**  
 2016  
 Laboratory Medicine Congress & Exhibition  
 & **KSLM** 57<sup>th</sup> ANNUAL MEETING

Floor	Convention 1F	Avenue 3F	Convention 2F		Avenue 2F	Avenue 1F		
Room	Four Seasons	Dongkang Hall	Grand Ballroom A	Grand Ballroom B	Geumkang Hall A	Hankang Hall		
08:00	Exhibition	Poster	<b>EW 06</b> LG Life Sciences	<b>KS 03</b> Healthcare, laboratory medicine and patient care				
09:00			<b>SY 13</b> Applications to disease gene identification & diagnostics using next-generation sequencing	<b>SY 14</b> Clinical laboratory quality issues in Asia	<b>OP 05</b> Diagnostic Hematology	<b>OP 06</b> Clinical Microbiology & Transfusion Medicine		
10:00			Break					
11:00			<b>PL 03</b> Rapid evolution in diagnostic medical microbiology (Grand Ballroom B, 2F)					
12:00			<b>EW 07</b> Alere Healthcare, Inc.	<b>EW 08</b> Sysmex Korea	<b>EW 09</b> BD	<b>EW 10</b> BioSewoom		
13:00			<b>ROCHE Workshop</b>	<b>KS 04</b> The Global spread of Dengue virus infection				
14:00				<b>KS 05</b> Tips of the latest WHO classifications	<b>SY 17</b>			
15:00			<b>SY 15</b>	<b>SY 16</b> Changing concept of myelodysplastic syndrome and new emerging biomarkers	Quality and safety in transfusion medicine			
16:00			<b>CAP:</b> International complementary quality solutions: ISO, CAP, LMF, etc					
16:00			KSLM General Assembly (Grand Ballroom B)					
17:00								
18:00								
19:00								
20:00								

PL: Plenary Lecture  
 KS: Keynote Speech  
 SY: Symposium  
 EW: Education Workshop  
 OP: Oral Presentation  
 K: Korean



# DAILY PROGRAM \_ October 28, Friday

08:00 - 09:00 **Education Workshop 06 (LG Life Sciences)** Grand Ballroom A  
(Eng.) (Convention Center 2F)

Chair Jong-Baeck Lim, Yonsei University College of Medicine, Korea

**AdvanSure alloscreen max panel for allergen-specific IgE test**  
*Eun-Jee Oh, College of Medicine, Catholic University of Korea, Korea*

Quality Saves Your Life  
**LMCE**  
2016  
Laboratory  
Medicine  
Congress &  
Exhibition  
& **KSLM** 57<sup>th</sup> ANNUAL  
MEETING

08:00 - 08:40 **Keynote Speech 03** Grand Ballroom B  
(Eng.) (Convention Center 2F)

Chair Young Joo Cha, Chung-Ang University Hospital, Korea

**Healthcare, laboratory medicine and patient care**  
*Howard Morris, University of South Australia, Australia*

09:00 - 10:40 **Symposium 13:** Grand Ballroom A  
(Eng.) **Applications to disease gene identification & diagnostics using next-generation sequencing** (Convention Center 2F)

Chairs Chang-Ho Jeon, Catholic University of Daegu School of Medicine, Korea  
Naomichi Matsumoto, Yokohama City University Graduate School of Medicine, Japan

SY13-01 **Mutation detection by next-generation sequencing in acute leukemia**  
*Seung-Tae Lee, Yonsei University College of Medicine, Korea*

SY13-02 **Mendelian exome in Japan**  
*Naomichi Matsumoto, Yokohama City University Graduate School of Medicine, Japan*

SY13-03 **Clinical exome sequencing for genetic disorders in Korea**  
*Chang-Seok Ki, Sungkyunkwan University School of Medicine, Korea*

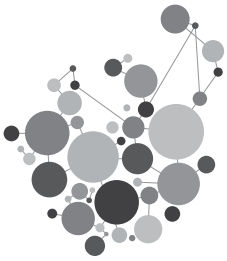
09:00 - 10:40 **Symposium 14:** Grand Ballroom B  
(Eng.) **Clinical laboratory quality issues in Asia** (Convention Center 2F)

Chairs Hyosoon Park, Sungkyunkwan University School of Medicine, Korea  
Nisarat Opartkiattikul, Royal College of Pathologist of Thailand, Thailand

SY14-01 **Laboratory quality assurance in Indonesia**  
*Yusra Yusra, University of Indonesia, Indonesia*

SY14-02 **Quality issues of clinical laboratory in Thailand**  
*Nisarat Opartkiattikul, Royal College of Pathologist of Thailand, Thailand*

SY14-03 **Survey the influence of external quality assessment scheme and biosafety to clinical laboratories at Southern provinces in Vietnam**  
*Tran Huu Tam, Center for Standardization and QC in medical laboratory at HCMC, Vietnam*



## DAILY PROGRAM \_ October 28, Friday

Quality Saves Your Life

**LMCE**  
2016  
& **KSLM**  
Laboratory  
Medicine  
Congress &  
Exhibition  
57<sup>th</sup> ANNUAL  
MEETING

- SY14-04 Quality issues of clinical laboratories in Myanmar  
*Khin Saw Aye, Asia Royal Hospital and Pun Hlaing Siloam International Hospital, Myanmar*
- SY14-05 Quality assurance of clinical laboratories in UAE  
*Minje Han, Sheikh Khalifa Specialty Hospital, United Arab Emirates*
- SY14-06 Accreditation of clinical laboratories in India  
*Praveen Sharma, All India Institute of Medical Sciences, India*

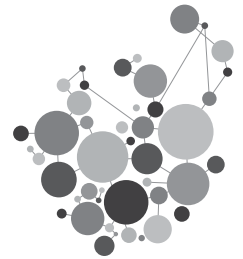
09:00 - 10:30  
(Eng.)

### Oral Presentation 05

Geumkang Hall A  
(Avenue 2F)

- Chairs Jong Hyun Yoon, Seoul National University College of Medicine, Korea  
Hyun Kyung Kim, Seoul National University College of Medicine, Korea
- 0-1 Contact system activation and hypercoagulability in hyperthyroidism: correlation with disease severity  
*Namhee Kim, Seoul National University College of Medicine, Korea*
- 0-2 Immature platelet fraction: a useful marker for evaluating the cause of thrombocytopenia and predicting platelet recovery  
*Kibum Jeon, Hallym University College of Medicine, Korea*
- 0-3 Overexpression of prohibitin 2 is associated with poor prognosis in normal karyotype acute myeloid leukemia  
*Jun Hyung Lee, Chonnam National University Medical School and Chonnam National University Hwasun Hospital, Korea*
- 0-4 Analysis of the Correlation between platelet parameters and clinical indicators in patients with acute ischemic stroke  
*Hyeon-Ho Lim, Dong-A University College of Medicine, Korea*
- 0-5 Development and validation of reflex testing rules for body fluid analysis using the Sysmex XN-550 automatic hematology analyzer  
*Young-Uk Cho, University of Ulsan College of Medicine and Asan Medical Center, Korea*
- 0-6 How reliable is thromboelastography? A point-of-care coagulation analyzer in predicting acute trauma induced coagulopathy in isolated severe traumatic brain injury  
*Venencia Albert, All India Institute of Medical Science, India*
- 0-7 Benign hemoglobin variants that interfere with Hb A1c determination: electrophoretic patterns, HPLC analysis, and globin gene sequencing  
*Jong Kim, University of Florida, USA*
- 0-8 CD4 and CD8 T lymphocyte counts and their ratios in healthy pregnant females - a study at a tertiary care centre  
*Tarun Sharma, Dr S.N Medical College Jodhpur, Rajasthan, India*
- 0-9 The hypermethylation profile of apoptotic genes in myelodysplastic syndromes  
*Farhad Zaker, Iran University Medical Sciences, Iran*

# DAILY PROGRAM \_ October 28, Friday



09:00 - 10:10 (Eng.) **Oral Presentation 06** Hankang Hall (Avenue 1F)

Chairs Young Uh, Yonsei University Wonju College of Medicine, Korea  
Tae Hyun Um, Inje University Ilsan Paik Hospital, Korea

0-32 Usefulness of dried blood samples for detection, quantification, and molecular characterization of HBV DNA in Myanmar

*Yi Yi Kyaw, Molecular Technology Applications Division, Myanmar*

0-33 Multidrug, extensive drug, and pandrug resistance among enterobacteriaceae: a study in tertiary healthcare settings

*Adhi Kristianto Sugianli, Faculty of Medicine, Universitas Padjadjaran, Indonesia*

0-34 Antimicrobial susceptibility testing and the appropriate use of antibiotics among neonatal sepsis cases in tertiary hospital

*Ellyana Perwitasari, Faculty of Medicine, Padjadjaran University, Indonesia*

0-43 Human Cytokine-Induced Memory-Like natural killer cells exhibit potent cytotoxicity against solid tumors

*Sejong Chun, Samsung Medical Center, Korea*

0-44 Monitoring the temperature of red blood cells by using temperature-sensitive indicators

*Mikyong Park, Konkuk University School of Medicine, Korea*

0-45 An operation name categorization program for maximum surgical blood order schedules

*Young-gon Kim, Korea University College of Medicine, Korea*

0-46 ABO allelic frequency estimated by next-generation sequencing in Korean patients with hematologic malignancies

*Seon Young Kim, Chungnam National University School of Medicine, Korea*

10:40 - 11:00 Break

11:00 - 12:00 (Eng.) **Plenary Lecture 03** Grand Ballroom B (Convention Center 2F)

Chair Eui-Chong Kim, Seoul National University College of Medicine, Korea

Rapid evolution in diagnostic medical microbiology

*Alex Van Belkum, bioMerieux, France*

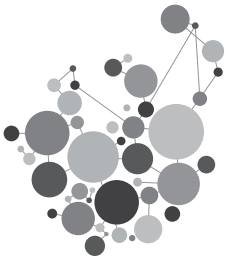
12:00 - 13:00 (Eng.) **Education Workshop 07 (Alere Healthcare, Inc.)** Grand Ballroom A (Convention Center 2F)

Chair Sail Chun, University of Ulsan, College of Medicine, Korea

Accuracy evaluation of five routine glycosylated hemoglobin assays in patients with hemoglobin variants in Korean population

*Yeo-Min Yun, Konkuk University School of Medicine, Korea*

Quality Saves Your Life  
**LMCE**  
2016  
& **KSLM**  
Laboratory Medicine Congress & Exhibition  
57<sup>th</sup> ANNUAL MEETING



## DAILY PROGRAM \_ October 28, Friday

Quality Saves Your Life

**LMCE**

Laboratory  
Medicine  
Congress &  
Exhibition

2016

& **KSLM**

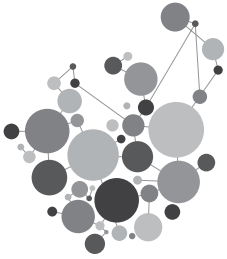
57<sup>th</sup> ANNUAL  
MEETING

12:00 - 13:00 (Eng.)	<b>Education Workshop 08 (Sysmex Korea)</b>	Grand Ballroom B (Convention Center 2F)
Chair	Yonggoo Kim, The Catholic University of Korea College of Medicine, Korea	
	Immature Platelet Fraction: a useful marker in diagnosis and prognosis of thrombocytopenia <i>Young Kyung Lee, Hallym University College of Medicine, Korea</i>	
12:00 - 13:00 (Eng.)	<b>Education Workshop 09 (BD)</b>	Geumkang Hall A (Avenue 2F)
Chair	Chae Seung Lim, Korea University College of Medicine, Korea	
	Is Plasma separator tube interchangeable with serum separator tube? <i>Woochang Lee, University of Ulsan College of Medicine, Korea</i>	
	Innovative non-gel separation technology delivers solutions to efficiency constraints in the clinical chemistry laboratory <i>Brian Smith, BD Diagnostics, Australia</i>	
12:00 - 13:00 (Eng.)	<b>Education Workshop 10 (BioSewoom)</b>	Hankang Hall (Avenue 1F)
Chair	Dong Hee Whang, Inje University College of Medicine, Korea	
	Standardization of CMV and EBV DNA quantification <i>Hee-Jae Huh, Sungkyunkwan University School of Medicine, Korea</i>	
13:00 - 14:00 (Eng.)	<b>Roche Workshop</b>	Grand Ballroom A (Convention Center 2F)
Chair	Eun Hee Lee, Green Cross Laboratories, Korea	
	Prenatal screening tests for fetal aneuploidy: Where are we now? <i>Farid Abdul Hadi, Roche Diagnostics Asia Pacific Pte Ltd, Singapore</i>	
13:00 - 13:40 (Eng.)	<b>Keynote Speech 04</b>	Grand Ballroom B (Convention Center 2F)
Chair	Sun Hoe Koo, Chungnam National University College of Medicine, Korea	
	The global spread of Dengue virus infection <i>Ida Parwati, Universitas Padjadjaran, Indonesia</i>	

# DAILY PROGRAM \_ October 28, Friday



13:40 - 14:20 (Eng.)	<b>Keynote Speech 05</b>	Grand Ballroom B (Convention Center 2F)
Chair	Chan-Jeoung Park, University of Ulsan College of Medicine, Korea	
	<b>Tips of the latest WHO classifications</b> <i>Gina Zini, Catholic University of Sacred Heart, Italy</i>	
14:00 - 15:40 (Eng.)	<b>Symposium 15: International complementary quality solutions: ISO, CAP, LMF, etc</b>	Grand Ballroom A (Convention Center 2F)
Chairs	Hwan Sub Lim, Seoul Medical Science Institute, Korea Richard C. Friedberg, College of American Pathologists, USA	
SY15-01	<b>Patients benefit from complementary quality solutions: CAP and ISO15189</b> <i>Richard C. Friedberg, College of American Pathologists, USA</i>	
SY15-02	<b>Implementation and future perspectives of laboratory accreditation program in Korea</b> <i>Hwan Sub Lim, Seoul Medical Science Institute, Korea</i>	
SY15-03	<b>International laboratory quality systems: CAP, ISO, and etc.</b> <i>Noel M. Adachi, College of American Pathologists, USA</i>	
14:20 - 15:40 (Eng.)	<b>Symposium 16: Changing concept of myelodysplastic syndrome and new emerging biomarkers</b>	Grand Ballroom B (Convention Center 2F)
Chair	Gina Zini, Catholic University of Sacred Heart, Italy	
SY16-01	<b>Definitions in myelodysplastic syndromes and the clinical utilization of molecular markers of disease and disease progression</b> <i>Annette Sunhi Kim, Harvard Medical School, USA</i>	
SY16-02	<b>Spectrum of myelodysplastic syndromes: Aplastic anemia, MDS, and predisposition to AML</b> <i>Dong Soon Lee, Seoul National University College of Medicine, Korea</i>	
14:00 - 15:40 (Eng.)	<b>Symposium 17: Quality and safety in transfusion medicine</b>	Geumkang Hall A (Avenue 2F)
Chairs	Kyoung Un Park, Seoul National University College of Medicine, Korea Hein Hustinx, Swiss National Immunohematology Reference Laboratory, Switzerland	
SY17-01	<b>Problem solving for difficult erythrocyte antibodies</b> <i>Hein Hustinx, Swiss National Immunohematology Reference Laboratory, Switzerland</i>	
SY17-02	<b>Blood regulation affairs in Japan</b> <i>Masahiro Satake, Japanese Red Cross Central Blood Institute, Japan</i>	



# DAILY PROGRAM \_ October 28, Friday

Quality Saves Your Life  
**LMCE**  
2016  
Laboratory  
Medicine  
Congress &  
Exhibition  
& **KSLM**  
57<sup>th</sup> ANNUAL  
MEETING

SY17-03 Blood management system using RFID  
*Quehn Park, Armed Forces Medical Research Institute, Korea*

15:40 - 16:00  
(Kor.) **KSLM General Assembly**

Grand Ballroom B  
(Convention Center 2F)